

Title: Procedure for Behavior Referrals

Control Information

Control Item	Details
Owner/Curator	Melissa Harris
Document #	ProcedureST00023
Supersedes	None
File Location	www.muddycreekcharterschool.org
Board Approval Date	October 8, 2013
Consult and Notify	ICP, ED, HT, AA, All Staff

Revision History

Revision	Date	Revision Description	Originator
A	10/8/13	Initial Release	Melissa Harris
B	9/11/14	Numbering and format revision	Melissa Harris

1. Procedure for Behavior Referrals

1.1. Objective:

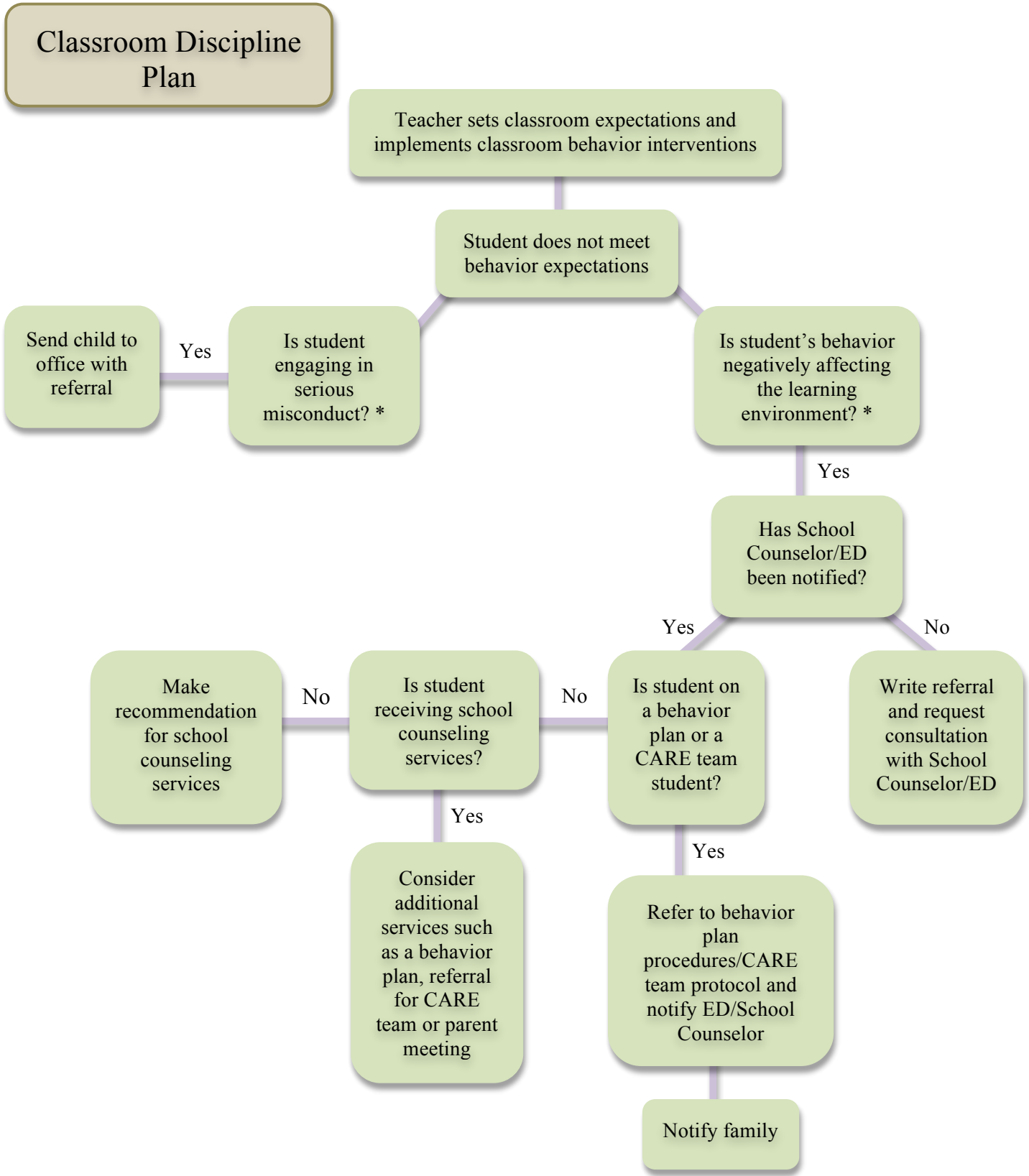
The objective of this policy is the following

1. Define the procedure for referring behavior issues in the care of the classroom teacher.
2. Define the procedure for referring behavior issues at recess.

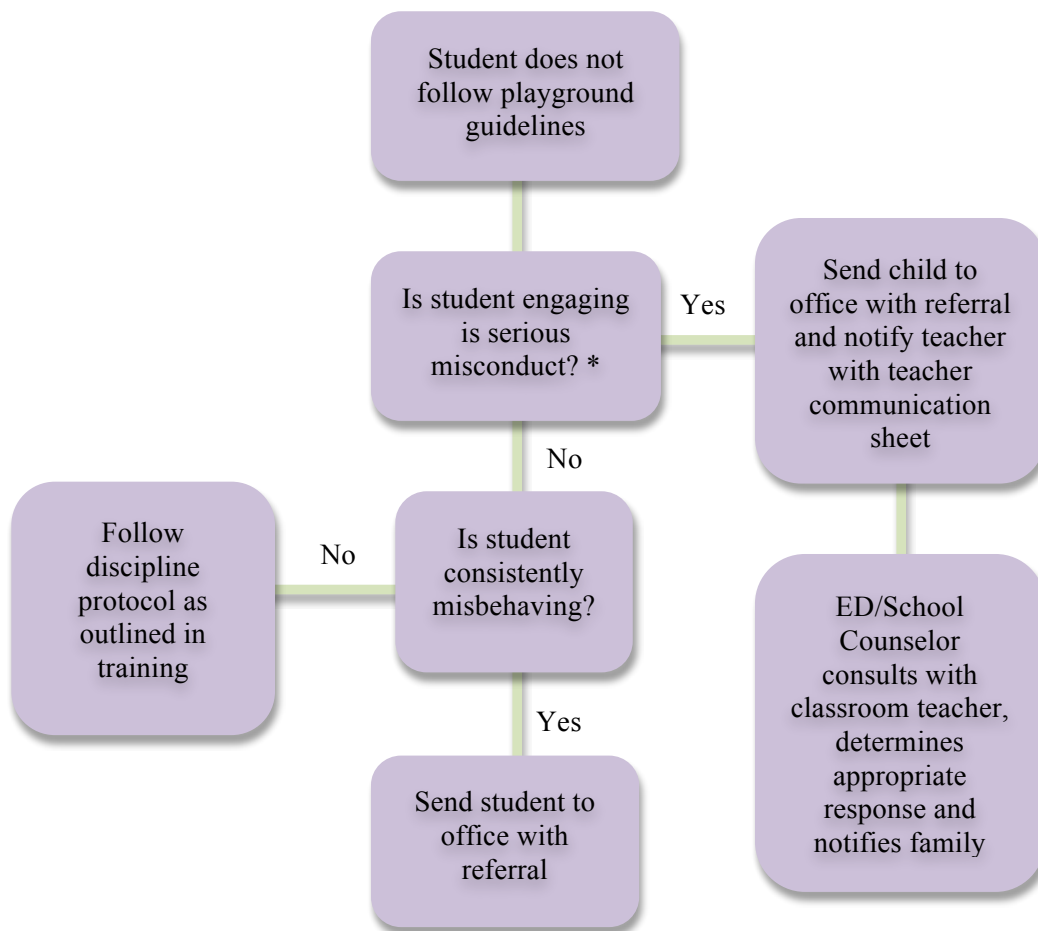
1.2. Behavior Referrals for Students in the Care of the Classroom Teacher or Playground Staff

While the most behavior issues can be managed successfully in the classroom or playground setting, referrals may be necessary for the following reasons:

1. A student does not respond to correction from a teacher or other staff member.
2. A student repeatedly makes behavior choices that interfere with classroom instruction or the well being of other students.
3. Referral form will include: Name of staff member reporting the incident, date and time, location, and a brief description of the incident.



**Playground
Discipline Plan**



* Please refer to the Student Code of Conduct (Policy 00035 subsection 1.3.5) to determine what behaviors constitute “serious misconduct” and/or “disruptive conduct”.

1.3. Behavior Plan or Contract

A behavior plan or contract defines the expectations for the student, teacher, appropriate school staff and parents in carrying out the plan. A behavior plan or contract will be based on a variety of information including parent and teacher reports, classroom observation and, when appropriate, student contribution. A behavior plan/contract may need to be modified based on the changing needs of the student and/or teacher.